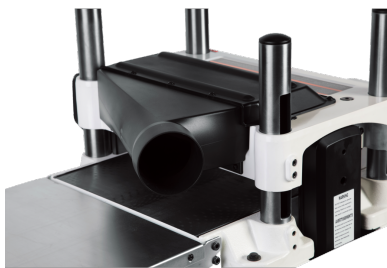
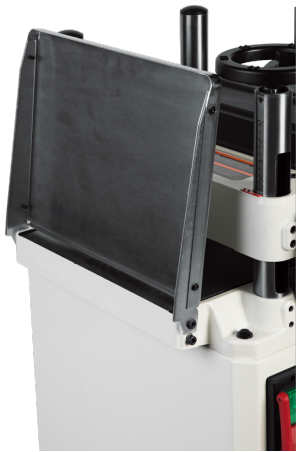
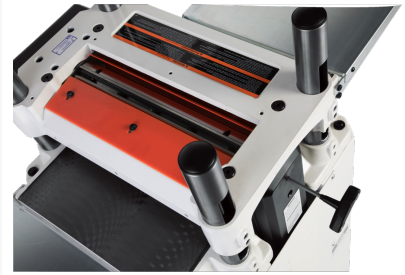




15" JET Straight Knife Planer, JWP-15B

Product Images





Description

For projects that require board thickness to be beyond exact, the New JET 15" Straight Knife planer gets the job done with ease. This sweet machine features a monster 3-horsepower motor with two speed gear box to adjust your feed rate for a better finished surface. The innovative Precision Air Strut System (PASS™) provides consistent upward pressure on the cutterhead, reducing the chance of board snipe. Its rock-solid table is constructed of precision ground cast iron and features steel infeed/outfeed table extensions which provides support for larger work pieces that conveniently fold out of the way. And because even the coolest power planer is one of the messiest machines on the planet, JET's angled 4" dust port keeps your dust hose out of the way for easy hookup on your shop's dust collection system.

Additional Information

Stock Number	JT9-722150
Cutterhead Speed (RPM)	5200.0000
Motor Amps	11
Motor Power (HP)	3
Motor Voltage (V.)	230
Number of Knives	3
Number of Speeds	2
Prop 65	Cancer and Reproductive Harm
Style (Type)	Floor standing Model
Table Size (L x W) (In.)	15 x 21.45 in.
Type of Cutterhead	Straight Knife